

Welcome 🖐️

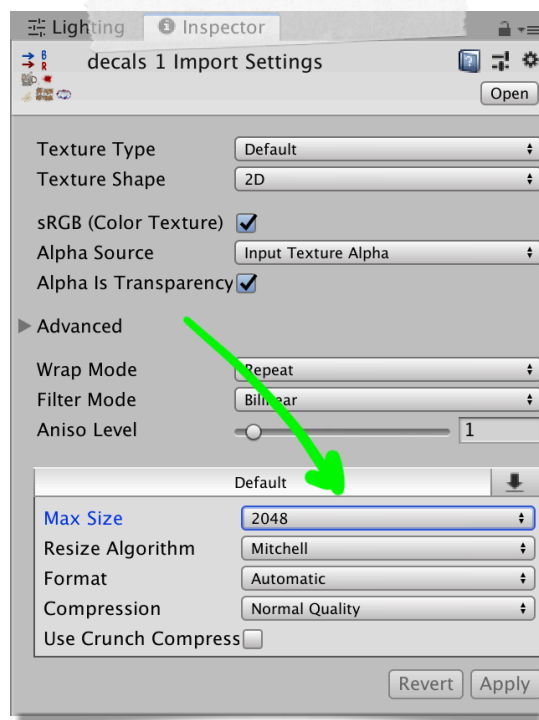
We the Gerc Studio team thank you so much for purchasing our **Industrial Multiplayer Map**! Hopefully, it will be very helpful for you.

If you have any questions, feel free to contact us, and we'll be happy to help! 😊

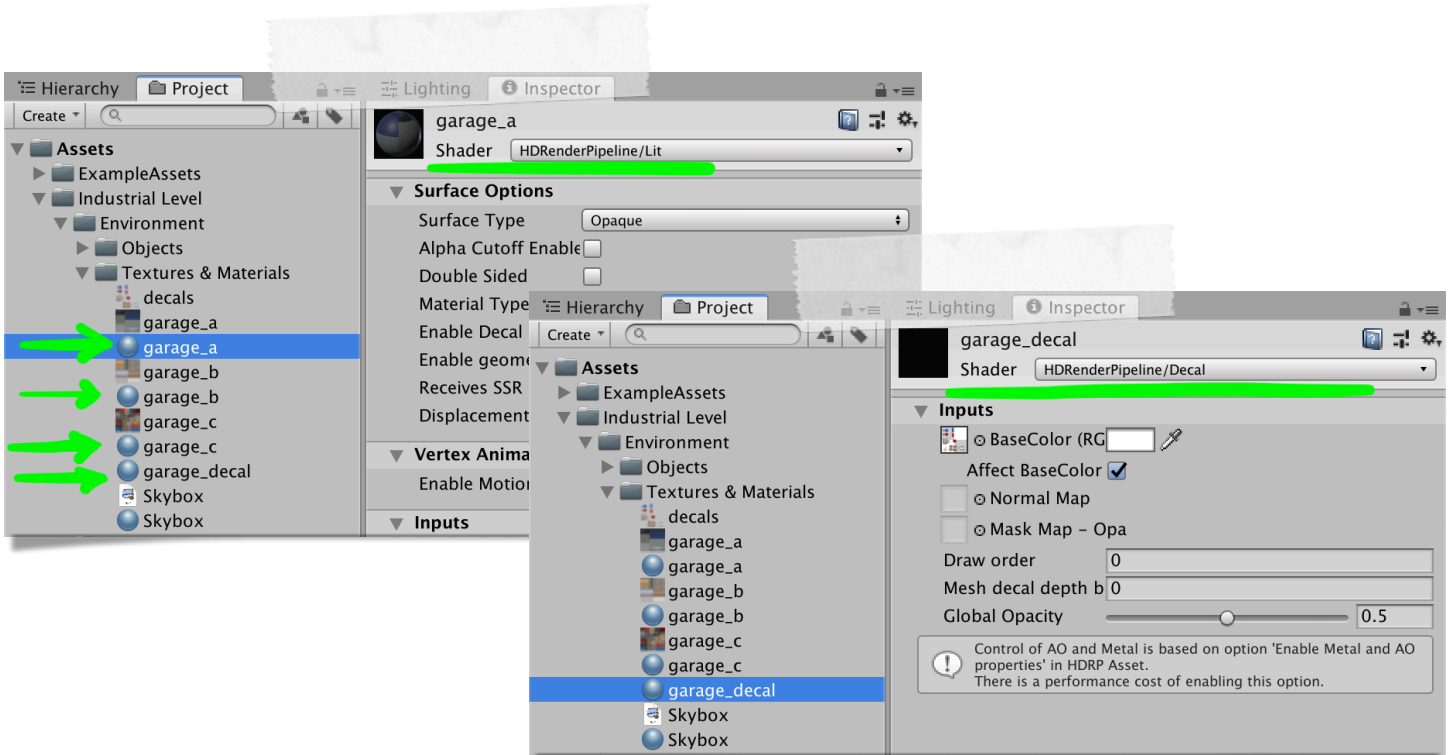
- [Discord](#)
- [Email: gercstudio@gmail.com](mailto:gercstudio@gmail.com)

Tips 🤔

1. If you're going to use this map on **mobile platforms** or **VR**, better to set textures size to **2k or less**.



- To update the level for **URP** or **HDRP**, change shaders on the main materials - **garage_a**, **garage_b**, **garage_c**, **garage_decal**.



- If you have ready character climbing animations, you can set your own stairs in the **Tower** prefab

